

Installation & Configuration Guide

With Regulatory, Compliance & Safety Information

OBI200 Quick Start Guide



Step 1 Installation Requirements

Please check to see that you have the following:

1. **OBI200 Device**
2. **Ethernet Cable**
3. **Power Adapter**

You will also need:

1. **One touch tone phone.**
This can be an analog or digital, corded or cordless phone.
2. **An active Internet connection.**
3. **Access to the Internet via an Ethernet port on your router.**
4. **(Optional but very useful) An Internet phone service subscription with all required username and password credentials.**



OBI200 Device



Ethernet Cable



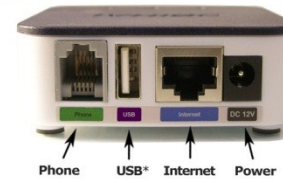
Power Adapter

Step 2 OBi200 Installation

Please observe the following steps to install the OBi.

- A. Connect a phone to the green **PHONE** port - Use cable currently connected to phone.
- B. Connect one end of the Ethernet cable to the blue **INTERNET** port and the other end to an Ethernet port on your Internet router, broadband modem or Ethernet switch.
- C. Connect the power adapter to the OBi power jack and a power outlet.

OBI200 Rear



OBI200 Connections



LED Icon Light Behavior What It Means

	Off	The OBi is not receiving power.
	Solid Green	The OBi is operational.
	Flashing Green	The OBi is looking for a DHCP IP address.
	Flashing Orange	The OBi is upgrading. Do not unplug power!
	Solid Red	The OBi is non-operational.
	Flashing Green (Intermittent)	Light flashes when there is data activity on the Internet Ethernet port.

LED Icon Light Behavior What It Means

	Off	The port is not enabled.
	Solid Green	The phone is ready to be used.
	Flashing Green	The phone is in use.

*The OBI200 USB port may be used to connect the OBIWIFI, OBI BT accessories and/or an external storage device.

OBitalk Network - Do Not Use For Emergency Service Calls
Obihai Technology does not warrant the availability or quality of the OBitalk network. Furthermore, Obihai Technology will not be liable to you or any third party for any costs or damages arising directly and or indirectly from the use of this product's hardware & software including without limits any damage, or for any loss whatsoever.

After the acceptance of a Return Material Authorization (RMA) request, Obihai will attempt to refund, repair or replace the product. To request an RMA, please contact the party from whom you purchased the product.

Replacement, Repair, Refund

Obihai Technology provides a 1-Year limited hardware warranty. Obihai warrants to customer that this product will conform to its published specifications and will be free from defects in material and workmanship at the time of delivery and for a period of 1-Year thereafter. Without limiting the foregoing, this warranty does not cover any defect resulting from (a) any design or specification supplied by an entity other than Obihai, (b) non-observance of technical operating parameters (e.g. exceeding limiting values) or (c) misuse, abuse, using in abnormal conditions or alterations of any kind.

1-Year Limited Hardware Warranty

Warranty Information

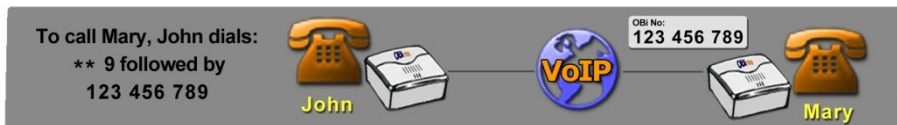
Step 3 Make a Test Call Using OBiTALK

At any time, you may place a test call to the OBi Number below:

Dial ****9** followed by: **222 222 222**

Your OBi is ready to make FREE calls to other OBi endpoints using the **OBiTALK** network. On the bottom of your unit, you will see a 9-digit OBi Number. This is **your** OBi Number. Give this number to your friends, family and colleagues so they can call you from their OBi device or using the OBiON iPhone and Android apps for smart phones.

To use the **OBiTALK** network, all you have to do is install your OBi, pick up the phone and then call your friends by dialing ****9** and **their** nine-digit OBi Number.



Step 4 Set-Up an OBiTALK Account Then Add Your OBi to the Account

Go to: **www.obitalk.com**

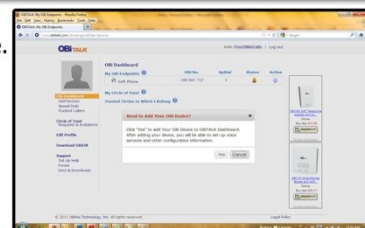
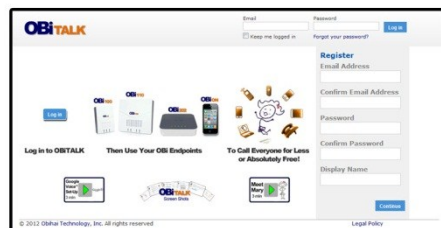
Register for an OBiTALK account. This will allow you to easily activate devices and add any commercial VoIP services used with your OBi.

The first time you log-in to OBiTALK, a pop-up window will appear allowing you to add your device. Click "Yes" to add Your OBi Device to the OBiTALK Dashboard. After adding your device, you will be able to set-up voice services and other configuration information. Multiple devices may be added to a single account.

Follow the on-screen instructions to add your OBi device to your OBiTALK account.

Once added, you will be directed to the Device Configuration page.

- Set your OBi display name, time zone, and daylight savings values.
- Select the "Save Changes" button.



Step 5 Set-Up VoIP Services

After you register and add your OBi device at www.obitalk.com, the OBi Device Configuration page will help you set-up commercial VoIP services such as the Google Voice™ communication service.

Do this by selecting the **Google Voice Set-Up** button. You may also select from any one of the other listed service providers. If your service is not there, you may use the Generic Service Provider option.

Generally, all you will need to set-up a service is the User Name and Password for the service.



How to Get Support & Learn More

Visit Our Web Site at: www.obihai.com/support.html

Here You Will Find:

Frequently Asked Questions

Support Forum - Got a Question Or Comment? Post It at the Forum

Tutorials, Tips & Wizards - Learn About & Get the Most from Your OBi

Downloads & Documentation - OBi Software & Documentation

Contact Support at: support@obihai.com - Please Provide Your OBi Number

Compliance & Safety Information

Do Not Use OBiTALK for Emergency Calls or Contacting Emergency Services

This equipment is not intended to be used to call emergency services like 911, 112, 999, 000.

For indoor use only. Read installation instructions before connecting to a power source. The electric plug & socket must be accessible at all times as this is the main method to disconnect power from the device. Shock Hazard: Do not operate near water or similar fluid. Do not work with this device during periods of lightning activity. Do not touch wires at end of the phone cables or inside sockets.

Important: Only an analog telephone or fax machine should be connected to the OBi PHONE port. Do not connect a cable from the PHONE port to a telephone jack powered by the phone company. Doing so may cause damage to the OBi electronics.

This equipment has been tested & found to comply with a Class B digital device in accordance with the specifications of the FCC rules. This product bears the CE marking indicating compliance with the 89/336/EEC directive.




How to Perform a Factory Reset:

1. Power on the OBi device.
2. Locate the Factory Reset button access hole on the bottom of the OBi. It is a circular hole (a little larger than the others) just above and to the left of the Model ID on the product label.
3. Using a paper clip or similar instrument, depress the button inside the hole for 15 seconds.
4. The Power LED will flash red. This indicates you may release the button and the OBi will now be reset to its factory defaults.

Note: A service provider may restrict some settings from being reset to a factory default.

OBi Device Manager Web Page Access:

1. From a phone attached to the OBi, dial ******* to access the OBi config attendant.
2. Choose **"1"** to hear the IP address of the OBi.
3. Enter the OBi IP address in a local PC browser web site address window:

4. When prompted, enter **"admin"** for username & **"admin"** for password.

OBi, OBiTALK are trademarks of Obihai Technology, Inc.